



# COMPLEX LIVER DISORDERS AND THEIR MODIFYING FACTORS

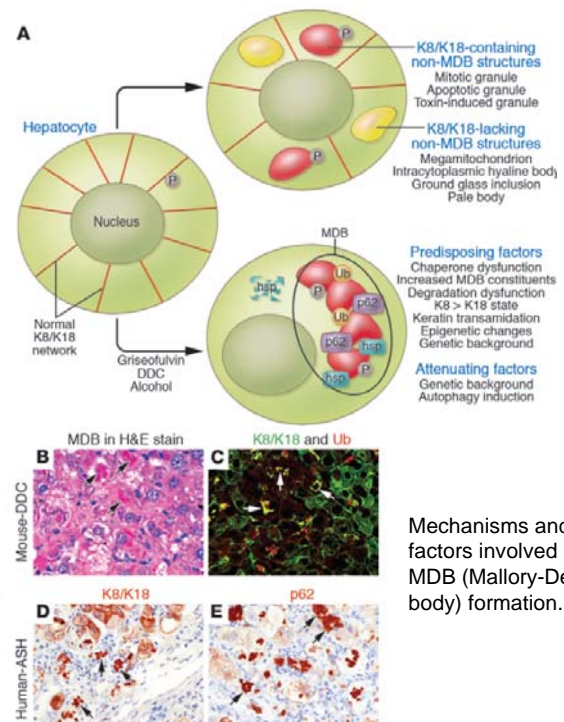
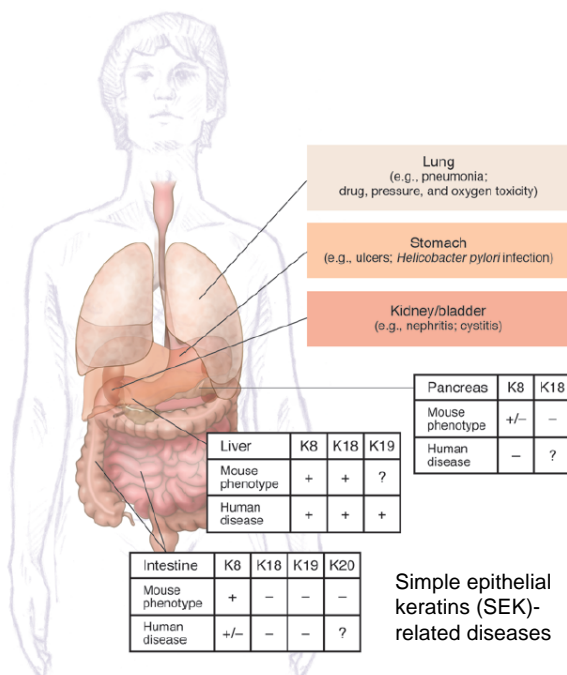
GUEST LECTURE by

**Pavel Strnad, MD**

Clinical Centre of Internal Medicine  
University Clinics Ulm, Germany

Monday, 20.02.2012  
17:00h

Department of Pathology, Lecture Hall  
Auenbruggerplatz 25, ground floor



Mechanisms and factors involved in MDB (Mallory-Denk body) formation.

Toward unraveling the complexity of simple epithelial keratins in human disease  
*J. Clin. Invest.* 119:1794–1805 (2009).

Hosts: **Kurt Zatloukal**  
**Johannes Haybäck**